

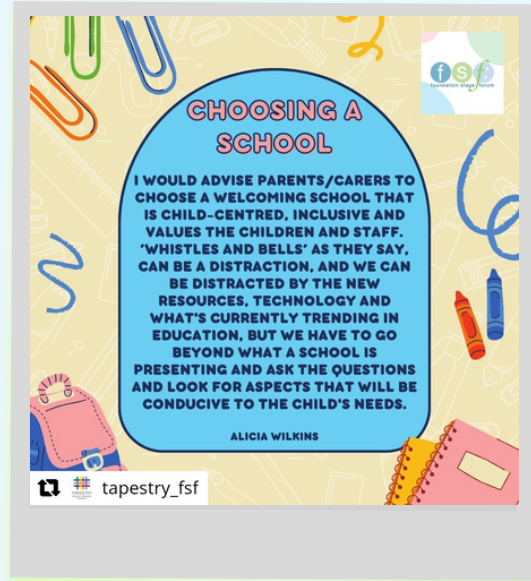
SOCIAL CPD

Volume 6 - November 2022

A curation of thought provoking or informative posts from Instagram over recent weeks.



Cari Ebert expands on what she means when she says 'neurodiversity-affirming'.



A new article on the FSF from Alicia Wilkins all about choosing the right school,



Helen shares an activity that was inspired by the art work of Minnie Pwerle.



Dr Lisa Marnell helps us to remember that 'all play is the right way to play'.

